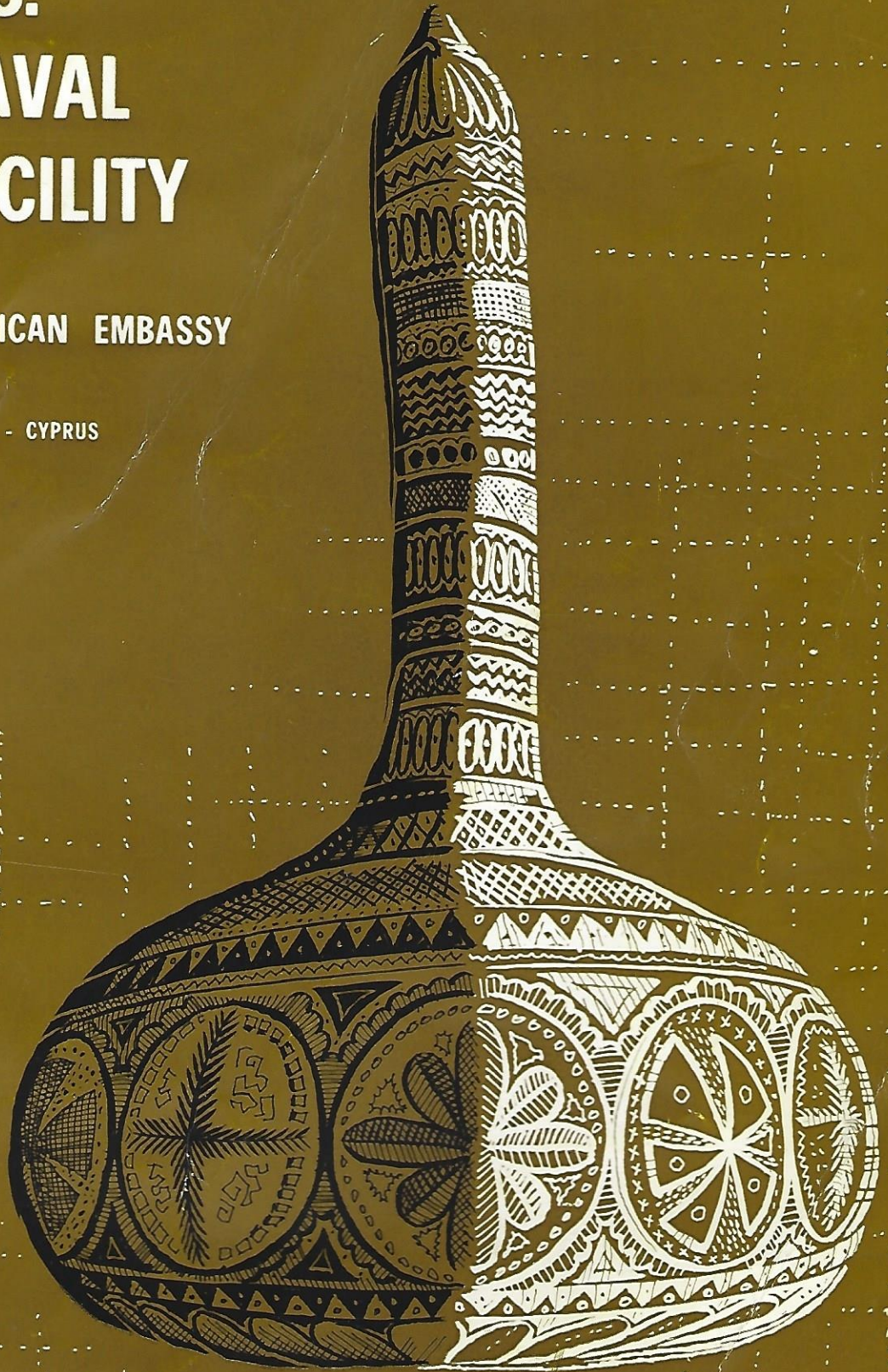


U.S. NAVAL FACILITY

AMERICAN EMBASSY

NICOSIA - CYPRUS



U.S. NAVAL FACILITY

AMERICAN EMBASSY •

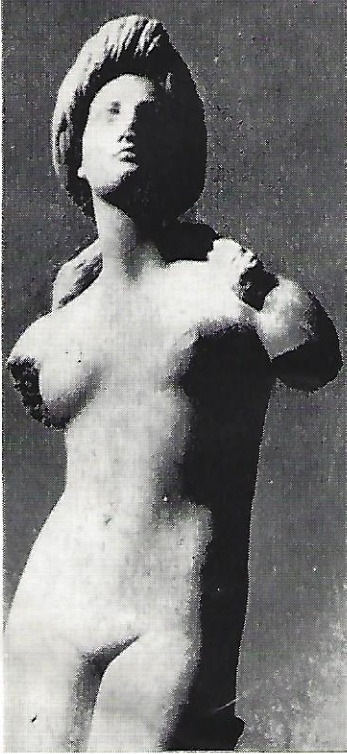
NICOSIA - CYPRUS

**Edited by
LT GARY M. GRAY, USNR**

**Cover and Majority of Photographs by
ANTIS IOANNIDES
U.S. Information Service, Nicosia, Cyprus**

**Art Work by
J. B. NIXON, YN2**

This guide is published for free distribution to personnel ordered for duty to the Naval Facility, American Embassy, Nicosia, Cyprus. It is commercially produced by Proodos Printing and Publishing Co. Ltd., Nicosia, Cyprus, using appropriated funds, in compliance with NAVEXOS P-35.



APHRODITE

Greek Goddess of Love, said to have been born of the foam off the coast of Paphos.



SALAMIS — Greatest of all the city-kingdoms of Cyprus, founded in 1184 BC. Shown is the Marble Forum

CYPRUS - THE LAND AND THE PEOPLE

Cyprus is a curious blend of East and West, steeped in an extraordinary cultural history and abounding in archeological remains. Just 60 miles from Syria and Lebanon, Cyprus has always felt the Oriental influence and has been a convenient stepping stone to the Middle East for Western invaders.

One of the first mentions of Cyprus in recorded history identified it as a tributary of an Egyptian pharaoh. After the Trojan Wars, Greek settlers from the Aegean Islands established their culture, which is predominant to this day. Subsequently, the Island became successively a part of the empires of Alexander the Great, Rome and Byzantium. Paul, Barnabas and John Mark are said to have introduced Christianity in 45 AD. Richard the Lion-Hearted occupied the Island in 1191 and later sold it to Guy de Lusignan, who inaugurated 300 years of Frankish rule. Then Cyprus was taken over by the Venetians, later conquered by the Sultan of Turkey and finally annexed in 1914 by Great Britain. In 1960 Cyprus became an independent republic.

Cyprus has a population of just over a half million — about 80 percent Greek and 18 percent Turkish. The Island is divided into 6 districts, of which the principal towns are

Nicosia, Limassol, Famagusta, Larnaca, Paphos, and Kyrenia. Each is a distinctive blend of East and West. In the 600-odd villages, time appears to have simply stood still.

Cyprus is the third largest island in the Mediterranean with an area of 3,572 square miles: 140 miles east to west and 60 miles north to south.

There is an abundant variety of landscape: 400 miles of indented coast line with many good bathing beaches; the broad and fertile plain of Mesaoria, the site of the island capital, Nicosia; the pine forests of the Troodos Mountains; the hill resorts and snows of 6,400-foot Mount Olympus.

The many scenic areas of Cyprus are all easily accessible over a reasonably good network of roads. There are 600 miles of asphalted highway and 2,400 miles of village and forest roads. Taxis and U-drive cars can be hired in all the main towns at approximately the same rates as in the U.S.

CLIMATE

Cyprus, situated as it is in the eastern Mediterranean on latitude 35, enjoys a semi-tropical climate. The summer is hot, but there is little humidity. The average shade temperature during the day from June to September

is between 90 and 104 degrees, dropping to about 65 degrees at night. In winter one might enjoy occasional temperate days on the beaches yet in the Troodos Mountains 30 miles southwest of Nicosia, there may be three feet of snow with hundreds of skiers enjoying their sport. Spring is green and warm but gusty, while autumn is yellow and dry. The rain falls chiefly between October and March, usually in heavy showers, followed by periods of sunshine. In August, temperatures do occasionally rise to 110 on the central plain — they are ten degrees lower by the sea — and in February, it is cool and damp in Nicosia, though snow has fallen on rare occasions.



AMERICAN EMBASSY



RADIO RELAY STATION

LOCATIONS

● The U.S. Naval facility is located within the compound of the Department of State Radio Relay Station, approximately six miles west of Nicosia, near the village of Yerolakkos. Within the compound is the Administration/Operations Building, Supply and Disbursing facilities, Navy Exchange, Cafeteria and Post Office.

● The U.S. Naval Facility Special Services Department is located adjacent to the American Club, approximately mid-way between the Radio Relay Station and the American Embassy building which is located in Nicosia.

● The New Cleopatra Hotel, enlisted quarters, is located near the downtown business district, approximately six miles from the Radio Relay Station and approximately three miles from the American Club area.

BEFORE DEPARTURE

SPONSOR PROGRAM

Upon receipt of your orders and if you are married, the command will automatically assign a sponsor to you. The sponsor will try to assist you and your dependents in any way possible prior to, during and after your arrival and in general, help you to get settled in Nicosia.

You will probably receive a letter from your sponsor shortly after your orders arrive in Nicosia. If you do not receive such a letter,

you should write to the command's Personnel Officer and request any information you desire.

Sponsors are not normally assigned for single personnel, but may be if requested by the individual.

ADVISING THE COMMAND

In order that appropriate and necessary arrangements be made for you, it is important that you keep this facility informed of certain information. It is suggested that you advise

the command's Personnel Officer or your sponsor of the following :

- Full name, rank/rate
- Number of dependents, include ages and sexes of children
- Expected date of arrival
- Arriving via (flight number)
- Other relevant information

Just prior to departing the U.S., you may send a telegram (see page 4) to this command advising of your flight number, date and time of arrival so that you may be met at the airport.

PASSPORTS

Upon receipt of your orders from BUPERS or CMC you will be directed to apply for a passport. Passports **are required** of all military personnel, and dependents, in order to enter Cyprus. It is necessary that this be done before arrival in the country. A visa is not required prior to entry into Cyprus, but will be entered in your passport at the airport. Necessary further action will be taken by the Personnel Office upon arrival.

LUGGAGE

Normally, luggage is limited to 115 pounds for Navy personnel, 100 pounds for Marine Corps members and 66 pounds per dependent. The Bureau of Naval Personnel or Commandant of the Marine Corps may be requested to authorize excess allowance in basic orders.

ARRIVAL IN NICOSIA

Prior to arrival at Nicosia International Airport, you will be given a debarkation pass to fill out and turn into Cyprus Immigration officials. In the spaces provided for where you are going in Cyprus, residence, and what your business will be, you should enter "Nicosia", "New Cleopatra Hotel" (Unless your sponsor has arranged for and provided you with the name of another hotel), and "Duty with the American Embassy."

All personnel arriving on the island who are not met by a representative of the command shall call NICOSIA 4538 (after normal working hours) or NICOSIA 5191, extension 38 (during working hours) and request assistance.

Your DOD Record of Immunization will be checked by Cyprus Health Authorities. It is necessary that you have this document readily available, and that all required shots for this area be taken prior to departing your old duty station to avoid immunization upon arrival in Cyprus.

BERTHING / MESSING

E-6 and below : The Navy has contracted with a local hotel to provide accommodations for all unaccompanied personnel. This hotel, the New Cleopatra, has been designated as government quarters. No government mess is available, although meals are served by the owner of the hotel at nominal prices. All personnel are given a full subsistence allowance.

E-7 and above : Insufficient space is available in the New Cleopatra Hotel to accommodate all assigned personnel. As a general rule, all personnel in pay grade E-7 and above have the option of living ashore and drawing housing allowances.

Officers : No BOQ exists. All officers are provided with allowances for living ashore.



NEW CLEOPATRA HOTEL

CLOTHING

Civilian clothing is mandatory for all military personnel stationed in Cyprus. It will be worn when coming to Cyprus, while on duty here, and when departing. However, Navy and Marine Corps personnel are required to have with them a complete sea bag. Enlisted personnel receive a \$300 clothing allowance to defray the cost of additional civilian clothing. Personnel living in the New Cleopatra Hotel will insure that they have two laundry bags.

Working uniform is as follows :

Officers: Coat and tie
E-7, 8 & 9: Tie, coat optional
E-6: Encouraged to wear tie, coat optional
E-5 and below: Sports shirt and slacks

Duty section uniform: Coat and tie
Liberty uniform: Normally, sport shirt and slacks are appropriate. Coat and tie are required after 1800 when patronizing night clubs and better class restaurants.

When making initial purchases before departing from the States, it is recommended that in view of the long summers, that priority be given to lightweight clothing. "Wash and wear" fabrics are highly recommended. During the winter months, heavier clothing is needed, in addition to a raincoat.

Laundry and dry cleaning services are available locally at reasonable prices. Shoes may be purchased but are not of the same quality as stateside.

NAVY EXCHANGE

The Navy Exchange is quite small and its stock is limited to the minimum basic necessities such as tobacco products and hygiene items. The size of the exchange retail store and its limited range of stock will not be increased in the foreseeable future. Cyprus import tariff charges make the prices of most items cost on the average of 30 percent over normal U. S. Navy Exchange prices. It is recommended that a charge account be opened with Sears Roebuck, Montgomery Wards, or other mail order house in order to make available items desired from the States.

The Navy Exchange operates a cafeteria at the Radio Relay Station which offers three meals daily, including a hot noon and evening meal.

POSTAL / TELEGRAPHIC

Postal service to and from the United States is via the Navy Postal System (FPO). Air mail and First Class mail service average two to three days each way. Parcel Post and First Class parcels take from four to six weeks in transit, both ways.

The mail address for this facility is :

Grade, Name, Service
U.S. Naval Facility
Fleet Post Office
New York 09531

International mail may be sent :

Name
U.S. Naval Facility
American Embassy
Nicosia, Cyprus

The telegraphic address is :

Grade, Name, Service
U.S. NAVFAC, AMEMB, NICOSIA, CYPRUS
c/o NAVCOMMSTA, WASHDC

Postal money orders are sold and cashed at the Post Office.

MONETARY MATTERS CURRENCY

Cyprus is within the Sterling Area. The monetary unit is the Cyprus Pound, valued at approximately \$2.80 to the Pound (£). The Pound is the legal medium of exchange throughout the Island, however, in the Navy Exchange and Navy Post Office, Military Payment Certificates (MPC) and U.S. coins are used. When checking in through customs, you may exchange U. S. dollars for Cyprus pounds, however, it is recommended that you wait and exchange your dollars with the Disbursing Officer.

PAY AND ALLOWANCES

Paydays are held twice a month on the 15th and 30th. Personnel are paid in MPC and/or Cyprus Pounds. You may elect to receive any or all of your pay in U.S. Treasury checks.

For current information concerning allowances, contact your Disbursing Office. Cyprus is currently in Cost of Housing Index No. 120 and Cost of Living No. 116. (Refer to Joint Travel Regulations). All personnel receive Cost of Living Allowances. Married personnel with dependents in Cyprus and single personnel authorized to live ashore are entitled to Cost of Housing Allowance.

CHECK CASHING SERVICES

Personal checks on U.S. banks may be cashed at the Navy Exchange, limit \$50.00, or the Disbursing Office in any amount not exceeding \$250.000. Checks of larger amounts may be cashed, however, proof of deposit must be shown.

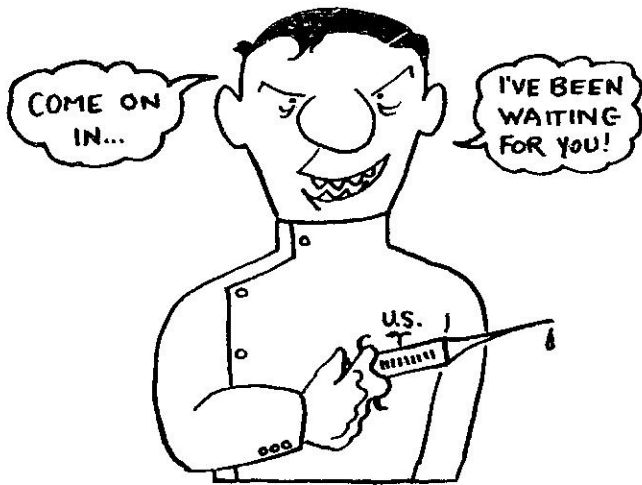
In addition, the Disbursing Officer is authorized to cash the following :

All U.S. Government checks
U.S. Postal Money Orders
Bank drafts and cashier's checks on U.S. banks
U.S. Dollar Travelers Checks

CHECKING ACCOUNT

It is recommended that a checking account be opened in a stateside bank before coming to Cyprus. Such accounts facilitate the payment of any bills owed in the U.S.

MEDICAL SERVICES



The Medical Department is located in the U.S. Embassy and is staffed by a Navy doctor, a Navy corpsman, and a State Department civilian technician. Medical care is provided for personnel and dependents by sick call, appointment or emergency treatment.

Persons requiring hospitalization are either treated at local clinics (hospitals) through arrangements by the Medical Officer or sent to the U.S. Naval Hospital at Naples, Italy, whichever is warranted by the case.

No Dental Officer is available, however, adequate dental care is available from local dentists. It is recommended that all possible dental, medical and optical work be accomplished prior to leaving the United States.

No reimbursement will be made for dependents' dental care or spectacles that may be required.

CHURCHES

The people of Cyprus are predominately Greek Orthodox or Muslim in their religion. A Roman Catholic church is available in Nicosia with English-speaking priests. Protestant services are held each Sunday in the Nicosia Community Church located near the New Cleopatra Hotel. A chaplain from the Naval Support Activity in Naples, Italy, visits this command once a quarter.

AUTOMOBILES

Upon arrival, providing you have a valid stateside driver's license, you may apply for a Cyprus driver's license. There is a nominal fee for this license.

Personnel are **not** permitted to import left-hand drive automobiles. Right-hand drive vehicles may be imported, but are subject to an import duty of 45 to 55 percent of the appraised Cyprus value. Appraised values range from \$50.00 to \$500.00 above stateside appraisals depending on year and model of car.

Detailed information concerning the shipment of vehicles is contained in BUSANDA (NAVSUPSYS) Manual, Volume V, Chapter 8.

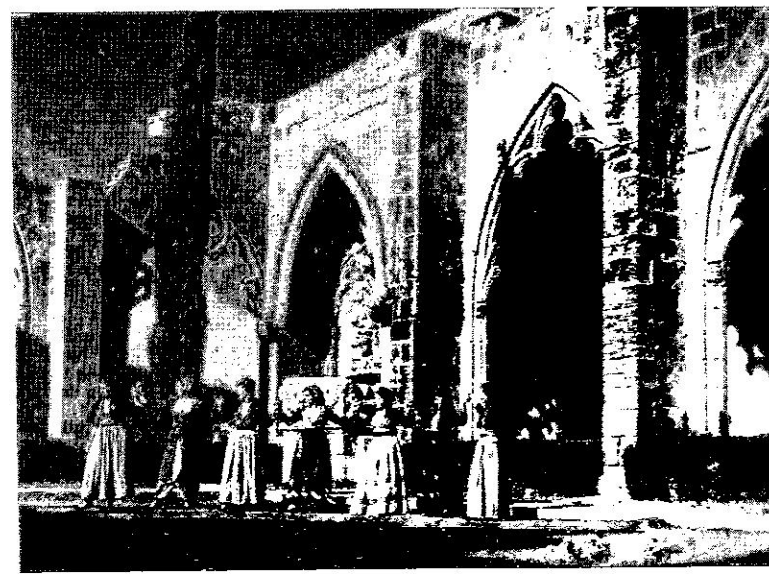
British, French, Italian and German cars (all right-hand drive) are available locally and are driven almost exclusively by the local populace, although some American cars may be seen. Cyprus roads for the most part are narrow, making large cars very cumbersome to handle.

Insurance on autos is available locally at comparable stateside prices or lower. Road tax must be paid on all vehicles either quarterly, semi-annually or annually. The tax is based on the weight of the car.

Personnel attached to this command are prohibited from operating or riding on any two-wheeled motor driven vehicle.

Automobiles may be rented locally from Hertz, etc., by the day, week, or month.

BELLAPAIS ABBEY—The most beautiful of medieval monuments in Cyprus. It was founded late in the 12th century and got its name from "Abbaye de la Paix" (Abbey of Peace). Superbly situated on a rock escarpment half way up the Kyrenia mountains, it commands magnificent views over much of the Kyrenia coast. In this picture Cypriot girls in national costumes dance in front of the cloister.



RECREATION

CLUBS

The American Club, operated by the State Department, and conveniently located on the outskirts of Nicosia, is open for membership to all American citizens. No membership fee is required. The club dining room and bar are open Tuesday through Sunday. Movies are normally shown each night except Monday, and evenings of special events. Dances are held periodically during the summer months on the second-floor open terrace and during the winter months in the ballroom.

Special events include occasional game nights and parties. Private parties may be arranged by members at very reasonable prices in club rooms. Outdoor facilities include a large swimming pool, childrens' pool, small play area and two hard-top tennis courts. The pool is open from May through September and a nominal fee is charged for its use.

Additionally, the following organizational clubs are open to appropriate membership:

- CPO Club
- E-6 Club
- NCO Club
- Navy Wive's Club
- American Women's Club

There is also a fair nine-hole golf club on the island which Americans may join at fairly reasonable rates.

The American Club.



SPORTS

Special Services located near the American Club, sponsors organized athletics throughout the year, including a softball league which runs from April into August, basketball during the winter season, volleyball and handball. Tennis gear is available, and the American Club maintains two hard-surface courts adjacent to the Navy Special Services area. Facilities for basketball, volleyball, badminton, handball and weight-lifting are available in the gymnasium. A four-lane bowling alley with automatic pin setters is also available and is open year-round. League bowling runs from September through March.

HOBBY SHOP

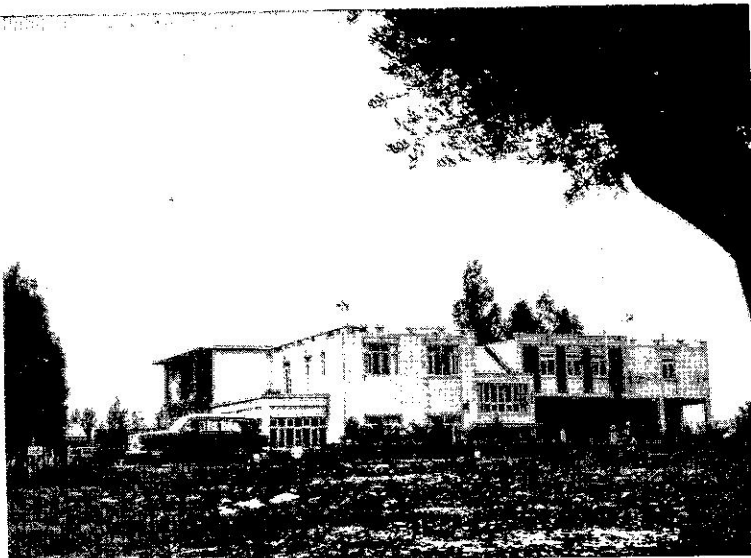
Special Services operates a hobby shop which is primarily designed for woodworking. The shop is open four hours on each of three different days of the week and is attended by a skilled carpenter who will assist personnel in their projects if desired.

LIBRARY

A library of approximately 3000 volumes is maintained at the New Cleopatra Hotel and is for use of all personnel. Additionally, various magazines are subscribed to for the benefit of all hands.

TRAVEL

Military personnel and their dependents are entitled annually to a morale travel flight to any place in the European area, and return by military aircraft. This program is administered through the Military Airlift Command system. Commercial flights are also available to Lebanon, Jordan (Jerusalem), Syria, Israel and Egypt. Tours may be arranged through local tourist agencies.



RADIO AND TELEVISION

There are three AM and an FM radio station on Cyprus, which carry programs in either Greek, Turkish or English. The British Forces Broadcast Service also operates a radio station. Television is broadcast a few hours on five evenings each week. Programs are presented in Greek and/or English in accordance with a published schedule. All radios and television sets must be declared with Cyprus customs when brought into the country. After checking in, personnel must file applications for licenses for any radios, TV's, phonographs, etc. Stateside television will not operate in Cyprus.

AMATEUR RADIO

No amateur radio operation is permitted. Importation of radio transmitters or transmitting equipment is strictly forbidden by the Government of Cyprus.

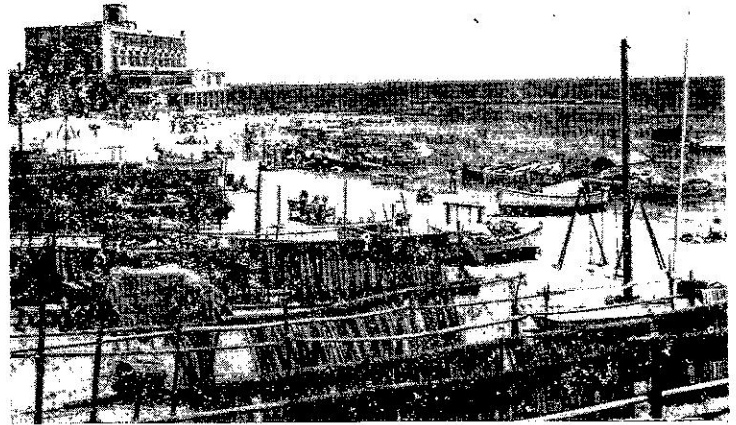
PHONOGRAPHS / TAPE RECORDERS

Phonographs and tape recorders are recommended, however, it is advisable to purchase the necessary 50-cycle modification parts peculiar to the manufacturer's specifications. Unless you are going to use a transformer, it is also necessary to convert to 240 volts. Records and tapes may be purchased locally at prices generally the same as in the U.S.

WINTER



The Troodos mountains in the south offer skiing (here the ski tow), but not skating, during January and February.



Numerous beaches, such as this one at Famagusta, offer a long summer of excellent swimming.

SUMMER

Sailing, bathing, spear-fishing and skin-diving are very popular during the summer months along the many beaches and indented coastline of Cyprus. While sharks have been known in bathing areas, they present no particular hazards, although caution should be exercised. The command maintains a "boat house" in Kyrenia on the northern coast of Cyprus for the use of single personnel. Skin-diving equipment, air mattresses, etc. are available for checking-out. The boat house is also arranged to accommodate single personnel overnight, i.e., cots, lockers, showers, etc.

There is also horse racing during the spring and autumn. Bicycles are available through Special Services or can be hired by the day or week in the towns. In Nicosia and some of the mountain resorts, horses may be hired.

FIREARMS / KNIVES

Firearms of all types are illegal and will not be allowed through Customs. Knives, other than kitchen type, with a blade longer than 2½ inches are also illegal and must be turned in.

MOVIES

In all the towns and in many of the villages, movie houses are in operation. During the summer, the number increases and they are held outdoors. Movies are primarily in Greek or English. American movies are shown at the American Club and the enlisted living quarters.

MARRIED PERSONNEL

PASSPORTS

Passports are required for military sponsors and dependents for entry into Cyprus.

Passports should be applied for as soon as possible after authorization to do so. Military members will be directed to obtain passports in their orders. The basis for dependents' passports is the letter of authorization for overseas travel. If in Washington, D.C., BUPERS/CMC will assist you in obtaining passports. Reference BUPERSINST 4650.14 (series) or MCO 5512.4.

DEPENDENTS' TRAVEL

Transportation of dependents will not be authorized by BUPERS/CMC until notification of entry approval has been received from this facility. Requests for concurrent travel and entry approval should be addressed to this activity. [Information to Chief of Naval Personnel (Pers-B313)].

Personnel not desiring concurrent travel may request transportation for their dependents after they have reported. In such instances dependents will generally commence travel approximately two months after application is made by the sponsor.

When considering concurrent travel with dependents to Cyprus, it is emphasized that: A stay in a hotel will be required which

The Junior School.



may vary from several days to a few weeks. A two-week stay is considered average. Hotel expenses for a four-member family (two rooms and full board) normally average \$18.00 per day. In accordance with the Joint Travel Regulations, a temporary lodging allowance (TLA) will be paid in these instances for a maximum of 60 days. The allowance is usually sufficient to cover the majority of room and board costs.

Personnel travelling by air are usually provided commercial (tourist) air transportation from JFK airport (New York) to Nicosia, Cyprus, via Athens, Greece, or Beirut, Lebanon.

CLOTHING

Very little ready-made clothing for men, women and children is locally available except for imported items. Tailors are available and are considered to be good; dressmakers are also available and are considered excellent, however, expensive. Fine wools are available, but they are expensive. Cottons may be purchased in a wide variety of bulk materials. Shoes are sometimes of a last other than those produced in the United States, and women may have difficulty purchasing styles and sizes to fit their needs. It is recommended that prior to leaving the U.S. that charge accounts be established in some of the larger department stores and mail-order concerns. The personal shopper in such establishments will usually be able to fill peculiar needs satisfactorily.

It is recommended that an initial supply of the following items be sent with your household effects:

- Shoes
- Hosiery
- Lingerie
- Childrens' clothing
- Men's civilian clothing
- Women's dresses, suits, blouses
- Sweaters (cashmere obtainable locally below U.S. prices)
- Raincoats, overshoes, etc.
- Coats, medium weight
- Moisture resistant clothing bags
- Baby clothes and shoes
- Diapers and special toiletries, powders and creams for infants.
- Sewing supplies

SCHOOLS

There are no service operated schools in Cyprus and the American Community in Nicosia must depend on private schools for the education of its dependent children. Schools in Cyprus are administered in accordance with the standards of the educational system of the United Kingdom, and a large proportion of the teaching staffs are English or English trained.

Children from age 5 to 12 are currently enrolled at the Junior School, while older students — depending on their capacity and the availability of instruction in English — may be enrolled locally at the American Academy for Girls, Terra Santa College, or the English School. An American service operated high school in the European area will accept students from the ninth thru the twelfth grade. (Boarding costs run approximately \$1.75 per day and transportation is the sponsor's responsibility.)

Local education is of a high quality and beneficial to American students up to the fifth grade. Beginning in fifth and sixth grades Latin, French and Algebra are introduced (as a necessary preparation for the so-called "eleven plus" examination required in all English schools) as core subjects — as well as Geography, English, etc., and for a reasonable opportunity to succeed and compete it is most important for fifth and sixth grade students to commence the school year in Cyprus.

Entrance examinations are required by the secondary schools in Cyprus, and American students are sometimes non-competitive because their previous education has not been such to prepare them adequately in languages, mathematics and English for testing at this level. Also older students who are college-oriented will suffer deficiencies (such as American History) that must be made up later if high school level work is attempted in Cyprus.

The Bureau of Naval Personnel currently authorizes sufficient funds to pay all schooling costs of registration, tuition, textbooks and supplies, library and laboratory, and transportation between school and home. School uniforms and accessories must be bought by the parents.

In Cyprus, children who attain their fifth birthday prior to 31 December of the current year are eligible for tuition assistance. When communicating with your sponsor it is most important to indicate the ages of your children in order that it may be determined whether educational facilities will be available for them.



Typical Rental House.

School uniforms are required by most schools in Nicosia, and may be purchased locally.

HOUSING

Government quarters are not available for married personnel. There is an adequate number of local rental houses and apartments available. In general one can expect to rent a three-bedroom house for approximately \$90.00 to \$125.00 per month and two bedrooms for \$85.00 to \$100.00.

Central heating is not common in Cyprus housing. Although many homes have a fireplace, additional space heaters are usually

Typical Apartment House.



needed. Kerosene, gas and electric heaters are available on the local market, however electricity is expensive.

At times during the summer months, water hours are imposed by the government to conserve water. Most homes are built with a storage tank on the roof which will normally tide a family over during non-"water hours."

Houses are usually completely unfurnished, i.e., no refrigerators, stoves, washing machines, furniture, etc. Hot water heaters are installed in most homes, usually one of three kinds: electric, propane gas, or kerosene.

Most homes are Mediterranean in design — stone and plaster construction, high ceilings and terrazzo floors. Entrance halls and balconies are prevalent.

UTILITIES

Cyprus power is 240 volts, 50 cycle, single phase. Step-down transformers are required for most U.S. made household appliances, and must be provided by families requiring them. Although possibly less expensive in the U.S., locally purchased transformers may operate more satisfactorily. Some U.S. appliances may over-heat even though operated in conjunction with step-down transformers as a result of the 50-cycle current. It is recommended that you have your electric appliances checked or converted for 50-cycle operation prior to shipment to Cyprus.

Cost of electricity averages approximately \$17.00 monthly provided electric room heaters are not used.

Propane gas (bottled gas) for kitchen stove will average \$6.00 per month.

The water bill is partially paid by the landlord, and normally costs individuals \$3.00 per month.

A fuel bill for wood (\$15.00 per ton) and kerosene might average \$30.00 monthly during the winter months of November thru February.

FURNITURE AND APPLIANCES

Furniture available locally is expensive and not up to U.S. standards.

Stoves, refrigerators and washing machines may be rented or purchased locally. They are designed to operate under local conditions, and although generally smaller than most U.S. models, are higher in price. The average rental price for a completely furnished house would be \$20.00 to \$30.00 more per month.

SERVANTS

Full time or part time maids are available for hire. Approximate salary for 8 hour day is 15 shillings (\$2.10), and 3 shillings (\$.42) per hour for baby sitting.

HOUSEHOLD EFFECTS

(HHE)

All families coming to Cyprus are vitally interested in what to bring and what HHE not to bring. A basic guideline as to what to bring is furnished below, but it is not to be considered the last word on decisions.

| | |
|---|---|
| Stove | Either gas modified for propane operation or electric stoves can be used. Recommend checking with local gas company for cost of conversion to bottled gas. Majority of personnel use gas stoves due to expense of electricity. Stoves are available for rent locally. |
| Refrigerator | Yes. However, U.S. models must be used in conjunction with a transformer and capable of operating on 50-60 cycle current. Refrigerators are available for rent locally. |
| Air conditioner | Yes. If house is positioned correctly to take advantage of breeze — not required. But, for persons allergic to heat recommend 240 volt 50-60 cycle type if already owned. Remember, electricity is expensive. |
| Deep freeze | Convenient, but not necessary. Transformer is required. 50-60 cycle operation required. |
| Percolators | Yes. |
| Toasters, waffle grills, mixers, blenders, fry pans, rotisseries, etc. (electrical) | Yes. |
| Pressure cookers | Yes. (Optional) |
| Pots and pans | Yes. Available on the local market but are expensive. Bring small roasting pan, cookie tins, cupcake trays, breadpans, etc. |
| Silverware | Yes. |
| Kitchen utensils | Yes. |
| Dish towels, dish clothes, linen, etc. | Yes. |
| Kitchen garbage cans | Yes. |
| Washing machines | Stateside models must be used in conjunction with transformers. Water pressure is not adequate for fully automatic washers. |
| Electric dryers | No. |
| Irons, steam irons | Yes. U.S. models must be used in conjunction with a transformer. Local models are available for purchase. |
| Ironing boards | Yes. Suggest sending one in express shipment. |
| Brooms and mops | Yes. Suggest sending one in express shipment. Available on the local market. |
| Television | No. If desired, suitable TV sets can be rented or purchased locally. U.S. sets will not operate locally. |
| Floor polisher | Yes, if owned. Transformer required. |
| Vacuum cleaner | Yes. Transformer required. |
| Living room furniture | Yes. Available locally but medium quality. |
| Draperies | See below under "CURTAINS". |
| Table and floor lamps | Yes. |
| Phonographs | Yes. Will require conversion for 50 cycle. |
| Pictures | Yes. |

| | |
|--|---|
| Radios | Yes. Annual license must be obtained after arrival. £1.250 (\$3.50) charge for this license at present. |
| Card table | Yes. |
| Rugs | Yes. |
| Books | Yes. |
| Dining room furniture | Yes. Medium quality and expensive on local market. |
| Table linens | Yes. |
| Beds/bedroom furniture | Yes. Medium quality and expensive on local market. |
| Electric clocks | No. Due to 50-cycle current, U.S. clocks will not keep accurate time. |
| Bed linens, blankets, pillows, etc. | Yes. |
| Electric blankets | Yes, if owned. Transformer required. |
| Towels — bath or other | Yes. |
| Lawn and patio furniture and outdoor barbecue equipment | Yes, if owned. |
| Lawn mower | No. In almost all cases yards do not have any grass. |
| Children's furniture | Yes. |
| Baby carriage | Yes. |
| Electric razors | Yes. |
| Curtains | Yes. |
| Sewing machine | Yes. Transformer required if electric. |
| Electric heaters including fan heaters | Yes, but remember high cost of electricity. |
| All baby needs (crib, high chair, play pen, stroller, bottles, etc.) | Yes. |
| Wardrobe | Yes. In houses five years old or older there is limited closet space. Can be obtained locally. |

Household effects shipped from the U.S. are normally transported via American Export Lines (one or two ships per month). Average time for receipt of HHE is two months after turning them over to the transfer company in Washington, D.C. (slightly longer for inland states). Personnel have been known to receive their effects in as little as five weeks time, while others have waited four months.

Your air express shipment (1000 pounds) should be utilized to send adequate bed clothes, linens, cooking utensils, kitchen ware, etc. It would be advisable to turn in your air express shipment at least two weeks prior to your departure from the U.S.

CURTAINS AND DRAPES

American ready-made draperies and curtains may not fit local windows. Drapery material, in floral designs or solid colors, is available locally. Abstract design material is limited in selection. The window arrangement in Cyprus is somewhat different in that windows are larger, both in width and height and windows open in. Draperies are hung from a traverse rod above the window approximately 8 or 9 feet from the floor. American ready-made draperies may not fit. Most homes are fitted with shutters — either the type that roll up or the type that swing out to the side.

PETS

Personnel desiring to bring their pet dogs should send the following data to their sponsors: point from which dog will be shipped, breed, color, sex, age, name, and date on which animal can be shipped. Upon receipt of this data, the sponsor will obtain an import license from the Veterinary Service and forward it to the individual. This license, together with a certificate attesting to the good health of the dog, should accompany the container in which the dog is shipped. The sponsor will reserve a kennel at the Veterinary Service quarantine station.

Housing in the quarantine station is adequate and animals are well treated. Charges assessed by the quarantine station are (a) \$0.75 per day for room and board and (b) transportation from the port of entry and escort fees. Dogs coming from a rabies area must be quarantined for six months. However, a dog coming from a rabies-free area is usually released after a shorter period of quarantine, provided the owner agrees to keep the dog confined indoors for an additional period. To enter Cyprus, a dog needs to be inoculated against rabies.

Cats are not quarantined. The required import permit is issued upon the animal's arrival.

BACKGROUND INFORMATION

It is suggested that persons assigned to Cyprus attempt to familiarize themselves with the history and culture of the Island before coming, either by consulting the files of the *National Geographic* or through any of the books listed below:

Selected Bibliography

- | | |
|-------------------|---|
| Alastos, D. | <i>Cyprus: Past and Future</i> (London, 1948) |
| | <i>Cyprus in History</i> (London, 1955) |
| Arnold, Percy | <i>Cyprus Challenge</i> (London: Hogarth Press, 1956) |
| Balfour, P. | <i>The Orphaned Realm: Journeys through Cyprus</i> (London, 1951) |
| Chapman, F.F. | <i>Cyprus Trees and Shrubs</i> (Nicosia, 1949) |
| Durrell, Lawrence | <i>Bitter Lemons, Cyprus 1953 — 1956</i> (Faber & Faber, 1957) |
| Hill, Sir George | <i>A History of Cyprus</i> (4 Vols., London, 1940—1952) |
| Keshisian, K. | <i>Romantic Cyprus</i> (London, 1962) |
| Luke, Sir Harry | <i>Cyprus: A Portrait and an Appreciation</i> |
| Newman, Philip | <i>A Short History of Cyprus</i> |
| Widson, Reno | <i>Cyprus in Picture</i> (London, 1953) |
| Foley, Charles E. | <i>Island in Revolt, Legacy of Strife</i> |